

Interior Region – Staff Contact List



First Nations Health Authority



REGIONAL EXECUTIVE DIRECTOR
Lisa Montgomery-Reid

250.499.2248 / C: 778.214.7310
Lisa.Montgomery-Reid@fnha.ca



**DIRECTOR OF REGIONAL
ENGAGEMENT**
Extended Leave until 2022

Contact Nick Stephens or Myrah
Baptiste



ADMINISTRATIVE ASSISTANT
Phyllis Alexcee

778.940.1130 / C: 250.808.9563
phyllis.alexcee@fnha.ca



MANAGER, REGIONAL OPERATIONS
Jade Schneider

250.499.2242 / C: 250.510.5839
Jade.Schneider@fnha.ca



**MENTAL HEALTH & WELLNESS
MANAGER**
Duanna Johnston-Virgo

250.828.8306 / C: 250.319.9657
Duanna.Johnston-Virgo@fnha.ca

EPIDEMIOLOGIST
Vacant



MANAGER, PROJECTS
Nick Stephens

778.940.1131 / C: 250.212.8794
Nicholas.Stephens@fnha.ca



**FIRST NATIONS HEAD START
ADVISOR**
Lorrie Pada

604.817.4028
Lorrie.pada@Fnha.ca



PROJECT DEVELOPER
Peter Waardenburg

778.940.1133
Peter.Waardenburg@fnha.ca



PROJECT DEVELOPER
Vicki Manuel

778-694-7928
Vicki.Manuel@fnha.ca



DISTRICT MANAGER, EHS INTERIOR
Casey Neathway

250.852.4831 / C: 778-875-3486
casey.neathway@fnha.ca



REGIONAL NURSE MANAGER
Pamela Crema

778.940.1134 / C: 250.718.5401
Pamela.Crema@fnha.ca



**COMMUNITY HEALTH PRACTICE
CONSULTANT (CHPC)**
Carol Machell

250.256.7779 / 250.256.3103
Carol.Machell@fnha.ca



**COMMUNITY HEALTH PRACTICE
CONSULTANT (CHPC)**
Shawna Whitney

778.940.1151
Shawna.whitney@fnha.ca



**COMMUNITY HEALTH PRACTICE
CONSULTANT (CHPC)**
Mona Gray

778.940.1136
Mona.Gray@fnha.ca



REGIONAL PLANNER
Sue Wilson Cheechoo

250.819.1688
Sue.Wilson@fnha.ca



**REGIONAL MANAGER - PRIMARY
CARE**
Kaela Schill

778.940.1146 / C: 250.212.9012
Kaela.Schill@fnha.ca



**COMMUNITY RELATIONS
REPRESENTATIVE-HEALTH
BENEFITS**
Joyce Kenoras (Pooley)

250.828.2005
Joyce.kenoras@fnha.ca



CRISIS COORDINATOR LEAD
Nicole Cahoose

250.828.1701 / C: 250.819.0549
Nicole.cahoose@fnha.ca



ADDICTIONS SPECIALIST
Debra Robbins

250.374.3291 / C: 778.694.4548
Debra.Robbins@fnha.ca



PROJECT DEVELOPMENT
Georgina Mortensen

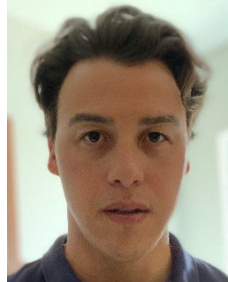
C: 250.267.9839
Gina.mortensen@fnha.ca



REGIONAL ADVISOR
Geraldine Manossa

250.499.2233 / C: 250.462.6089
Geraldine.Manossa@fnha.ca

COMMUNICATION SPECIALIST
Vacant



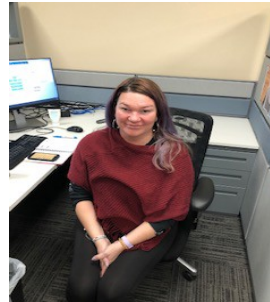
**TOBACCO CESSATION &
REDUCTION COORDINATOR**
Brett Draney

C: 604.916.8096
Brett.Draney@fnha.ca



**PROJECT DEVELOPER EMERGENCY
MANAGEMENT**
Shalyn Pigeon

C: 236.597.5608
Shalyn.Pigeon@fnha.ca



CRISIS RESPONSE COORDINATOR
Emma Twidale

C: 778.583.0203
Emma.twidale@fnha.ca



**REGIONAL MENTAL HEALTH AND
WELLNESS LIAISON**
Londea Riffel

250.374.3220 / C: 250.819.0992
Londea.riffel@fnha.ca



**PROJECT DEVELOPER,
MENTAL WELLNESS**
Myrah Baptiste

C: 250.499.9391
Myrah.Baptiste@fnha.ca



**REGIONAL COMMUNICABLE
DISEASE EMERGENCY NURSE
ADVISOR**
Natasha Hatendi

C: 250.256.1584
Natasha.Hatendi@fnha.ca

**NATION SHARED SERVICES
PROJECT MANAGER**
Nicola Terbasket, B.A.

C: 604.619.3215
Nicola.Terbasket@fnha.ca

COMMUNITY ENGAGEMENT COORDINATORS (CEC's)

Jamie Tanis	Däkelh Dené	250.398.7033	C: 250.267.9635	Jamie.Tanis@fnha.ca
Bernadette Collins	Nlaka'pamux	250.378.9772	C: 250.315.5227	collins.b@nlxfn.com
Joanne John	St'at'imc	250.256.7530	C:	healthadmin@statimchealth.net
Jennifer Lewis	Syilx		C:250.826.7844	wellness.manager@syilx.org
Shawn Scotchman	Secwepemc	250.571.1000		shchub@secwepemchealth.ca
Shannon Girling-Hebert	Ktunaxa	250.427.5879		SGirling-Hebert@ktunaxa.org
Connie Jasper	Tsilhqot'in	250.398.8587	C: 250.267.7299	health@tsilhqotin.ca
Coo-la Louis	ONA	250.707.0095	C:250.869.5364	WP.Analyst@syilx.org

Provide communications, collaboration & planning support to BC First Nations communities. Develop & support local community and Nation engagement activities as part of a regional team. Additionally, ensure that engagement functions & resources are effectively integrated, organized & leveraged to meet strategic & operational needs within the Nations and Region